



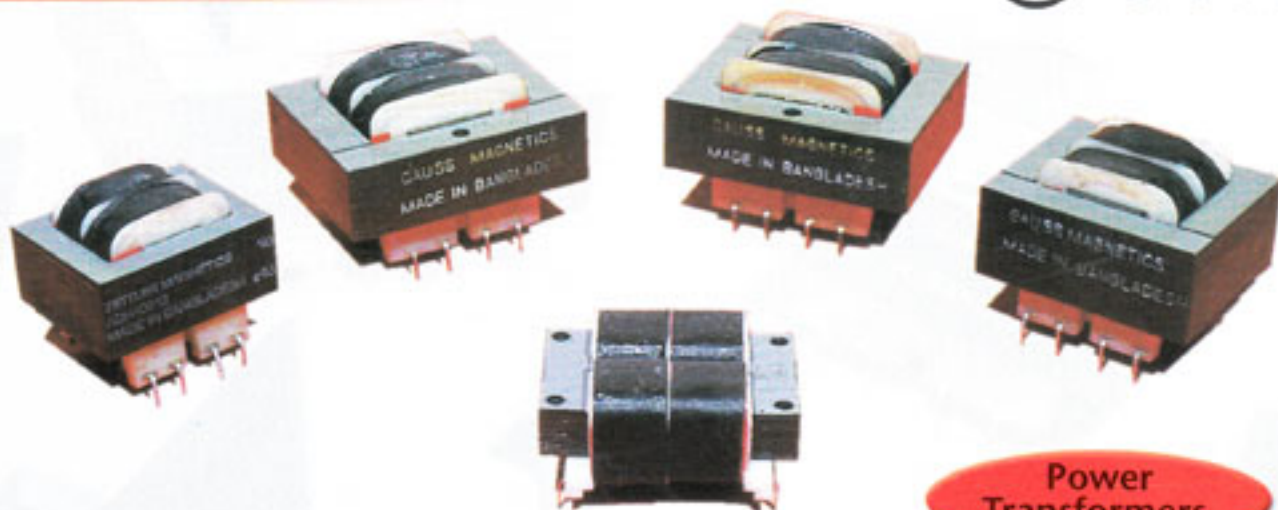
GAUSS MAGNETICS & ELECTRONICS LTD.

THE WINDING PROFESSIONALS

C o n t e n t s

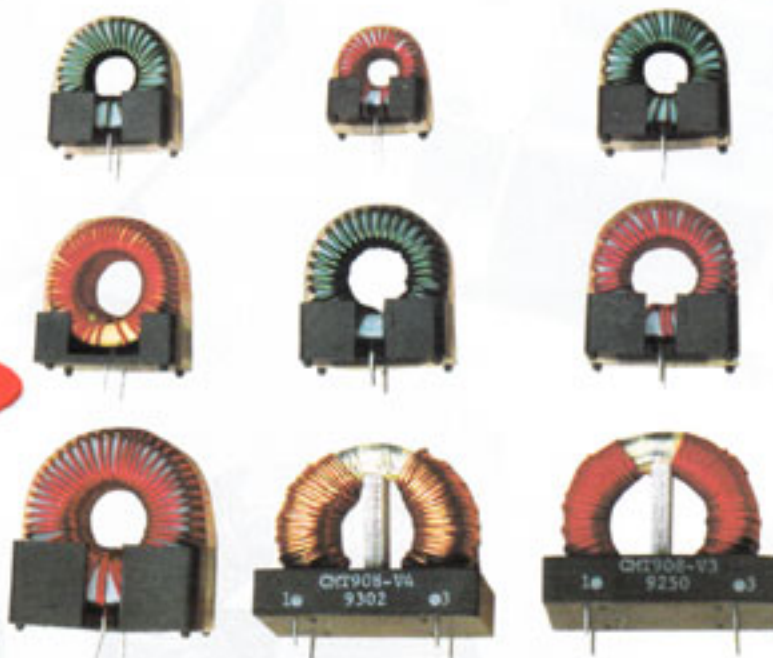
Milestones	2
Company Profile	3
Major Products	4-6
Electro Magnetic Energy Meter	7-8
Electronic Energy Meter	9-10
Quality Control Procedure	11
Organogram	12

MAJOR PRODUCTS



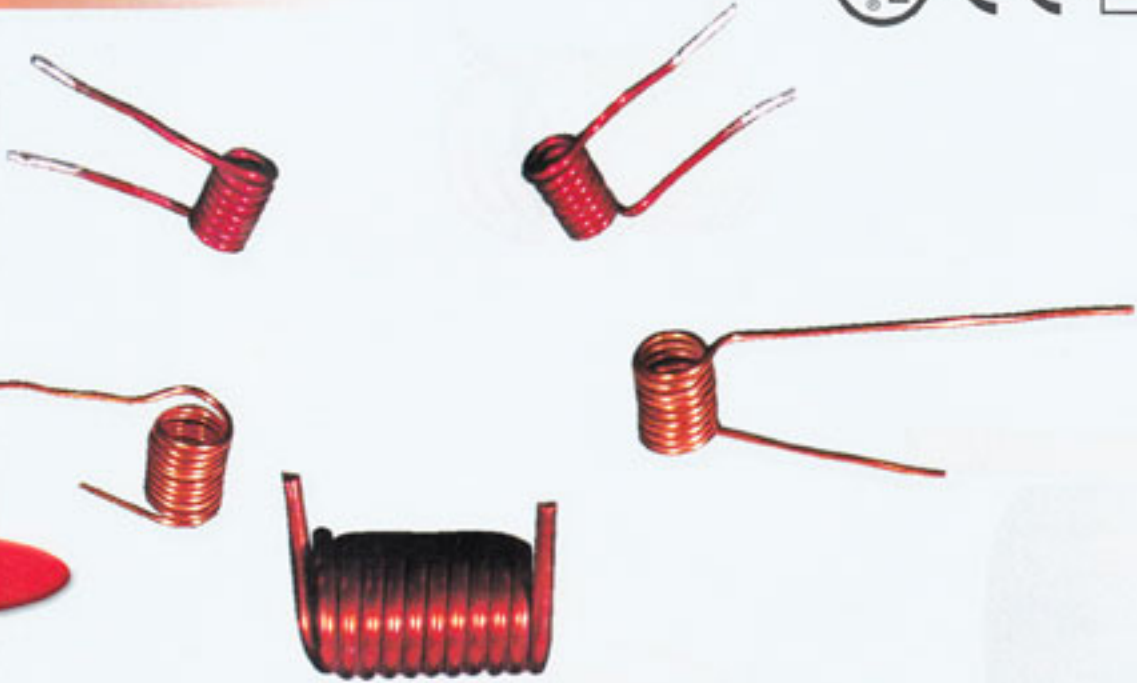
Power Transformers

Toroidal Transformers



Pulse Transformers

MAJOR PRODUCTS



Coils



Panel Meter



Filters

MAJOR PRODUCTS



Electro Magnetic Energy Meter



Electronic Energy Meter



ELECTRO MAGNETIC ENERGY METER

TECHNICAL DATA :

Rated Voltage	: 220V - 250V
Accuracy	: Class 2
Basic Current	: 10 (40) A (Whole Current)

FEATURE :

Standard	: IEC 521
Type	: GME 11
Installation	: Outdoor
Connection	: Single Phase, 2 wire, solidly grounded, neutral.
Maximum System Voltage	: 240V
Rated Voltage	: 230V
Frequency	: 50 Hz
Accuracy Class	: 2.0
Revolution	: 450 Rev./ KWH
Rotor Suspension	: Suspension Magnetic Bearing
Digit	: 5 + 1



GME 11

- Error of limit is compensated to $\pm 2\%$ over a wide from 10% to 400% of the rated load.
- Deviation from the set error ranges is very small even during fluctuation in ambient temperature, voltage and frequency.
- The range of error is stabilized over an extended period of time.
- Torque V_n . 1b 4.1 g. cm, rotor speed at V_n . 1b 11rpm or 22 rpm.
- Power loss in voltage circuit and current circuit is almost nil.

ELECTRO MAGNETIC ENERGY METER



GME 11 Alpha

TECHNICAL DATA :

Rated Voltage	: 220V - 250V
Accuracy	: Class 2
Basic Current	: 10 (40) A (Whole Current)

FEATURE :

Standard	: IEC 521
Type	: GME 11 Alpha
Installation	: Indoor / Outdoor
Connection	: Single Phase, 2 wire, solidly grounded, neutral.
Maximum System Voltage	: 250V
Rated Voltage	: 230V
Frequency	: 50 Hz
Accuracy Class	: 2.0
Revolution	: 450 Rev./KWH
Rotor Suspension Bearing	: Suspension Magnetic
Digit	: 5 + 1

- Error of limit is compensated to $\pm 2\%$ over a wide from 10% to 400% of the rated load.
- Deviation from the set error ranges is very small even during fluctuation in ambient temperature, voltage and frequency.
- The range of error is stabilized over an extended period of time.
- Torque Vn. 1b 4.1 g. cm, rotor speed at Vn. 1b 11 rpm or 22 rpm.
- Power loss in voltage circuit and current circuit is almost nil.

ELECTRONIC ENERGY METER

TECHNICAL DATA :

Rated Voltage	: 220V - 240V
Accuracy	: Class 1
Basic Current	: 10 (40) A (Whole Current)

FEATURE :

Standard	: IEC 1036
Type	: GME 22
Installation	: Outdoor
Connection	: Single Phase, 2 wire, solidly grounded, neutral.

Maximum System Voltage : 240V

Rated Voltage : 230V

Frequency : 50 Hz

Accuracy Class : 1.0

Digit : Register/LED/LCD



GME 22

- Error of limit is compensated to $\pm 1\%$ over a wide from 10% to 400% of the rated load.
- Deviation from the set error ranges is very small even during fluctuation in ambient temperature, voltage and frequency.
- The range of error is stabilized over an extended period of time.
- Power loss in voltage circuit and current circuit is almost nil.

ELECTRONIC ENERGY METER



GME 22 Alpha

TECHNICAL DATA :

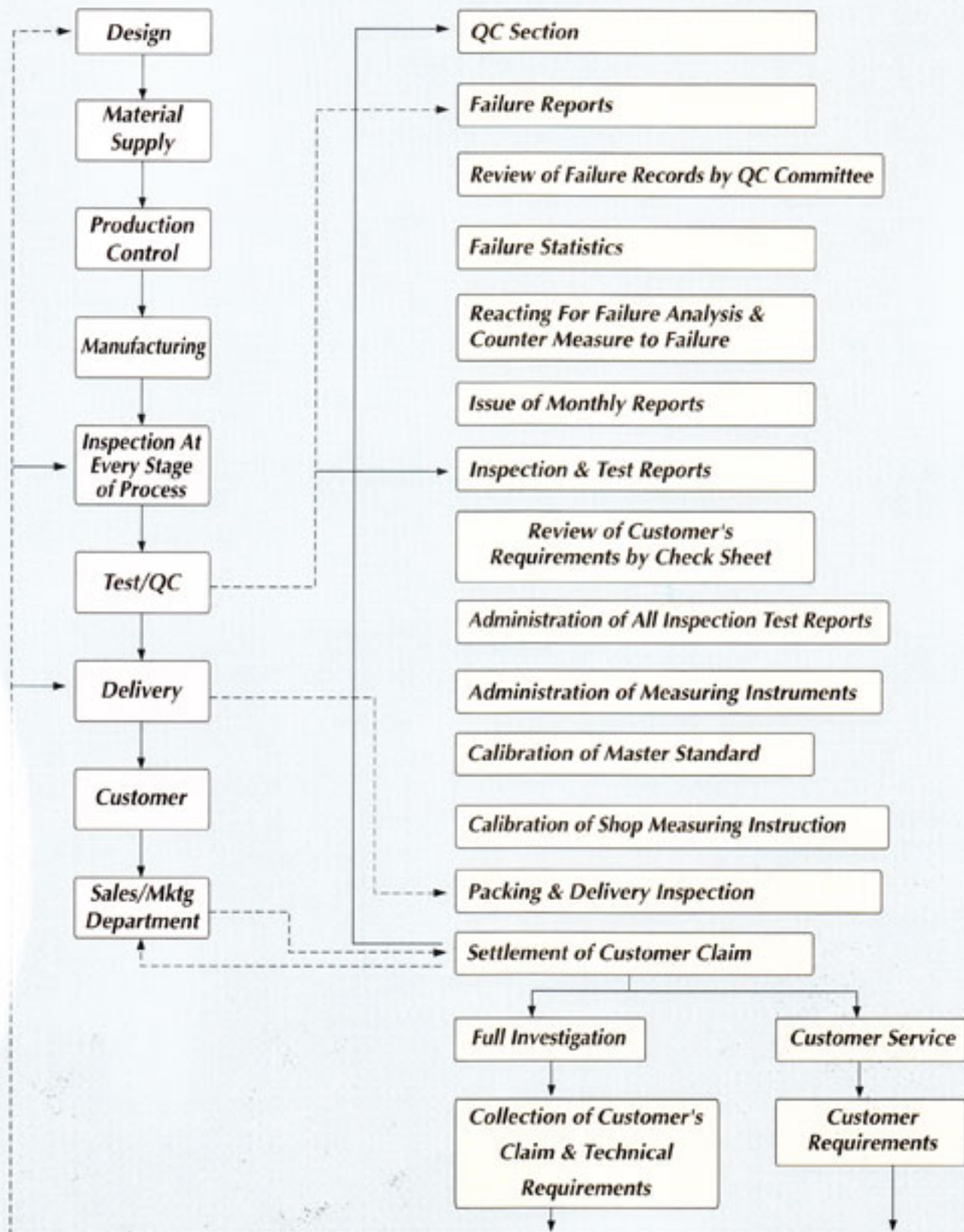
Rated Voltage	: 220V - 240V
Accuracy	: Class 1
Basic Current	: 10 (40) A (Whole Current)

FEATURE :

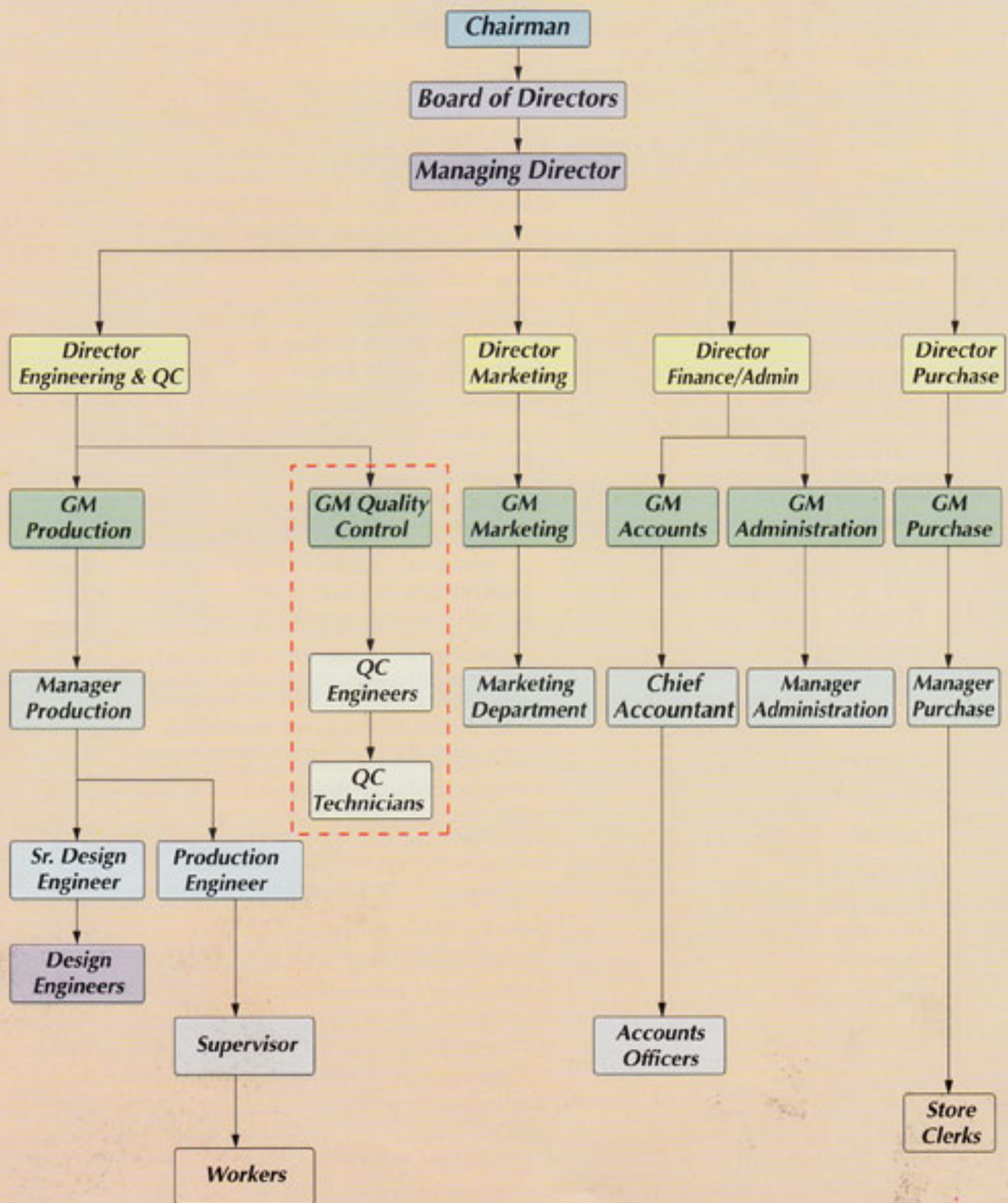
Standard	: IEC 1036
Type	: GME 22 Alpha
Installation	: Indoor
Connection	: Single Phase, 2 wire, solidly grounded, neutral.
Maximum System Voltage	: 240V
Rated Voltage	: 230V
Frequency	: 50 Hz
Accuracy Class	: 1.0
Digit	: Register/LED/LCD

- Error of limit is compensated to $\pm 1\%$ over a wide from 10% to 400% of the rated load.
- Deviation from the set error ranges is very small even during fluctuation in ambient temperature, voltage and frequency.
- The range of error is stabilized over an extended period of time.
- Power loss in voltage circuit and current circuit is almost nil.

QUALITY CONTROL PROCEDURE



ORGANOGRAM





Office : 13, Dilkusha Commercial Area, Dhaka-1000, Bangladesh
Tel : 880-2-9559893, 9551077, Fax : 880-2-9562667, E-mail : gme@bttb.net

Factory : BSCIC Electronics Complex, 8th Floor, Plot No. 1/1, Avenue-4
Section - 7, Road No. 3, Mirpur, Dhaka, Bangladesh., Tel : 8017601